

## Snorkel Safety



If you have a curiosity to explore our marine world, make sure you are familiar with **safe snorkelling practices**, like those below. Our full snorkel safety information can be found on signs at both bays, and by scanning the QR code.

- Be vigilant of your surroundings, other users, and vessels
- Snorkel during the recommended tidal stage
- Never snorkel alone
- Ensure you are medically and physically fit enough
- Do not snorkel in adverse weather
- If in doubt, don't go out
- Dial 999 if in need of emergency services

The above is a non-exhaustive list of safe practices and you should consider whether further measures are required to snorkel safely and sensibly in your own circumstances on any given day.

## Become a citizen scientist



Become a citizen scientist by downloading the 'Epicollect' app here and searching for the project "**Jersey Snorkel Trails recorder**". Help monitor the biodiversity in our beautiful bays by logging the species you see and any photos you take to this app.

## Win a free snorkel tour!

Scan to complete our feedback form for the chance to **win a snorkel tour** for two people (June-Sept).



Kindly supported by  
**mourant**

## Respect. Protect. Enjoy!

- Don't take anything natural
- Look, don't touch
- Take care with your feet and fins
- Take three for the sea – try to collect three pieces of litter and put them in the bin

## Species of Jersey

Look out for these beautiful marine species that you can see in Jersey's marine environment; with **approximately 3,200 species** found in our waters, these are just a few of what you might spot!

What did you see on your snorkel? Share your experience with us by tagging **#SnorkelPortelet** or **#SnorkelBouley**



Cuckoo wrasse □



Undulate ray □



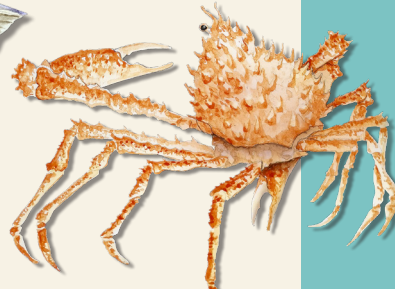
Lobster □



Blenny □



Bass □



Spider crab □



Brown (chancre) crab □

Pipefish □



Seagrass □

Kelp (oarweed) □

## Jersey's coastline

Jersey boasts some of the **richest coastal waters in Europe**. They are highly biodiverse; extensive seagrass meadows, kelp forests, maerl beds and reef structures provide habitats for species such as dolphins, seals, sunset cup corals and rare pink sea fans.

The stunning biodiversity found within these emerald waters is not just ecologically important, but it also sustains the livelihoods of fisheries and provides numerous recreational, well-being and health benefits to the local community.



## Snorkelling in Jersey

The more people learn about the ocean, the more passionate they feel about protecting it. Snorkelling is an easy and enjoyable way to observe our beautiful marine environment and learn about the importance of healthy marine ecosystems.

Consisting of two self-guided trails, **Snorkel Portelet** and **Snorkel Bouley**, **Jersey Snorkel Trails** provide an opportunity for all generations to spark an interest and appreciation for our oceans. Beneath the waves, you can find a wealth of marine life, with hundreds of different species living around rocky reefs, boulders and rocky outcrops, as well as seaweeds and kelps, forming underwater forests.



BLUE MARINE FOUNDATION

Jersey  
**Snorkel Trails**



# Snorkel Portelet

Located in the southwest corner of Jersey and nestled between stunning headlands, **Portelet Bay** boasts an element of isolation from the island, forming its own little oasis. A small islet located in the middle of the bay, **Janvrin's Tomb (or Île au Guerdain)**, is surrounded by water at high tide. At low tide, the islet becomes accessible via a soft sand bar.

In 2022, Portelet bay was designated as a **No-Take Zone (NTZ)** by the Government of Jersey as a result of a proposal put forward by the Société Jersiaise. This means that no fishing or other extractive activities are allowed in the bay, providing research, monitoring, and opportunities for citizen scientists (that's you!). Hopefully we will see Jersey's marine life flourish due to this NTZ designation!



## Areas of interest

**Snorkel Portelet** includes four areas of interest, named after some of the beautiful anemone species you can find here, and is designed to be completed on a **dropping tide**, between **mid- and low-tide**, when the sandbar is uncovered.



Strawberry

Beadlet

Snakelocks

Dahlia



Map key	
	park
	Official NTZ boundary
	Beach
	Buildings
	Road
	Main footpath
	Narrow footpath
	Parking
	Bus stop
	The Portelet Inn
	Portelet Bay Cafe
	Archaeological feature
	Île au Guerdain
	Viewpoint
	Site of Special Interest
	No fishing

While all reasonable care has been taken to ensure the information contained on this map is up to date and accurate, no warranty is given that the information contained on this map is free from error or omission. Any reliance placed on such information shall be at the sole risk of the user. Please verify the accuracy of the information prior to using it. Map © OpenStreetMap contributors.

# Snorkel Bouley

Tucked away on the north coast of Jersey, **Bouley Bay** is nestled between Jersey's tallest cliffs, with a pebble stone beach and a sandy shelf descending into deep blue waters. Two of the Snorkel Bouley trails are located around the small rocky tidal island called L'Islet.

Bouley Bay provides the perfect opportunity for first-time snorkellers due to minimal currents and swells. Due to this, you can snorkel here at higher tides, you just won't see as much marine life, so **mid- to low-tide** is best.

## Areas of interest

**Snorkel Bouley** includes three areas of interest, named after some of the stunning fish you might spot here.

Head to **Bouley Bay Dive Centre** to buy or hire snorkelling equipment, or to book your own snorkel tour of Snorkel Bouley or Snorkel Portelet. Any advice, such as on daily conditions, can also be found here.



Map key	
	park
	Beach
	Rocky habitat
	Buildings
	Road
	Main footpath
	Narrow footpath
	Pontoon (May-Sep)
	Parking
	Bus stop
	Toilets
	Bouley Bay Dive Centre
	Mad Mary's Café
	Fort Leicester
	L'Islet
	Viewpoint



Wrasse



Seahorse



Cuttlefish

**Snorkel Trail**  
For less experienced snorkellers, we recommend the **Seahorse** and **Cuttlefish** routes. For more experienced snorkellers, we suggest trying the **Wrasse** route around L'Islet.

Beginner routes — Advanced route —

While all reasonable care has been taken to ensure the information contained on this map is up to date and accurate, no warranty is given that the information contained on this map is free from error or omission. Any reliance placed on such information shall be at the sole risk of the user. Please verify the accuracy of the information prior to using it. Map © OpenStreetMap contributors.

